

ORIFICE PLATE & FLANGE

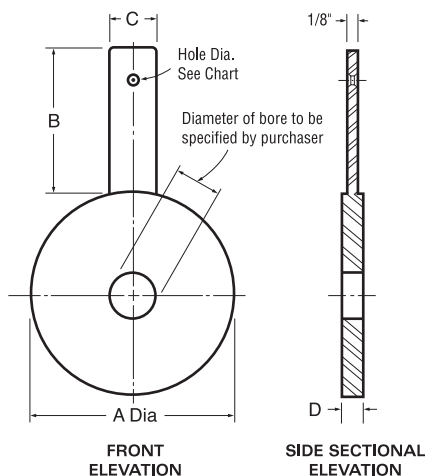


■ Orifice

Tapping of differential pressure is done by this vener contractor tap Orifice. Since Orifice plate can be installed directly to flange of pipe, flow measurement by this Orifice plate can be performed more economically than by orifice plates with rings, and it is generally suited for large diameter pipes. As for large diameter pipes of 500mm or greater, these Orifice plates are used to measure the average value of pressure by making some differential pressure tapping holes around the pipe and connecting thereto a loop form pressure equalizing pipe.



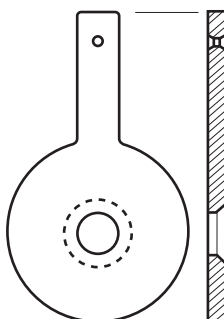
1. Orifice Plates (Model : DHOP)



DAEHAN Paddle-Type Orifice Plates are used with Orifice Flange Unions. All outer diameters of the plates are machined, providing a uniform circular disc. This results in a high degree of concentricity of the Orifice bore and the plate outer diameter. Next, handles are carefully welded on. The plates are then sanded in special machines to a prescribed finish. Bank plates and plates with popular bore size are stocked continuously. Each plate is stamped on its handle with line size, flange rating, Orifice bore and plate material. DAEHAN maintains a stock in Type 304 and 316 Stainless Steel in standard thickness. Other size and materials are available on request.

Diameters of holes in paddle Plate Handles are as flows:

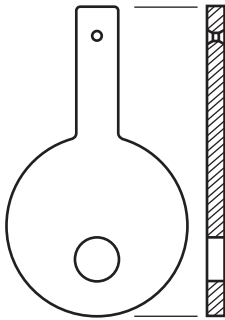
Plate Size	Hole Diameter
1/2" thru 2"	1/4"
1 1/2" thru 12"	3/8"
14" thru 24"	1/2"
26" and larger	3/4"



1) Concentric Edge

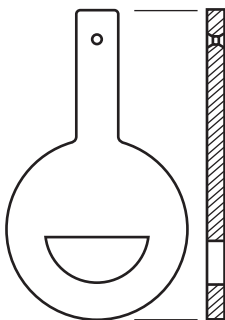
The bore and bevel is the standard of limiting the plate edge thickness. The bevel is machined on a 45 angle to the desired edge thickness. Unless otherwise specified, plates will be bevelled to 1/50 of the line I.D. or 1/8 of the Orifice bore, minimum governing.

ORIFICE PLATE & FLANGE



2) Eccentric

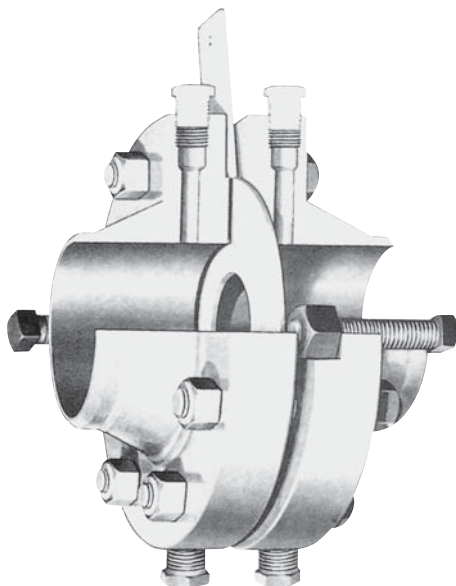
Eccentrically bored plates are plates with the Orifice offcenter, or eccentric, as opposed to concentric. The bore of the eccentric Orifice normally is inscribed in a circle which is 98% of the pipe diameter, so that solids or slurries may pass through. Eccentric Orifice plates are used in many industries including heavy and light chemicals, steel, paper, atomic and petrochemicals.



3) Segmental

Segmentally bore Orifice plates are provided for measurements where solids are entrained in a gas or liquid flow stream. The circular portion of the bore is inscribed within a circle which is normally 98% of the pipe diameter. The segmental opening may be placed either at the top or bottom of the pipe. Industries using these bores include sewage treatment, steel, chemical, water conditioning, paper, and petrochemical.

2. Orifice Flanges (Model : DHOF-W)



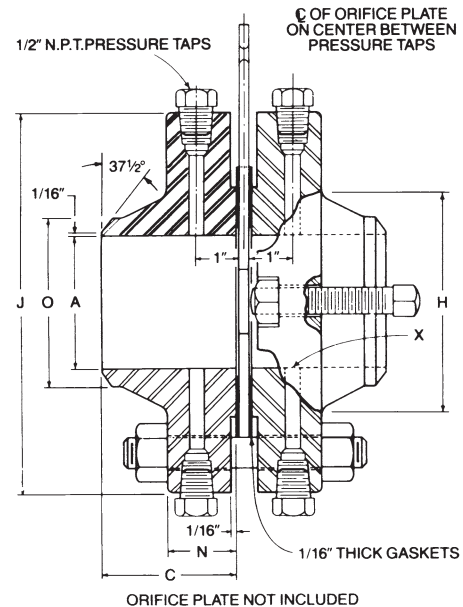
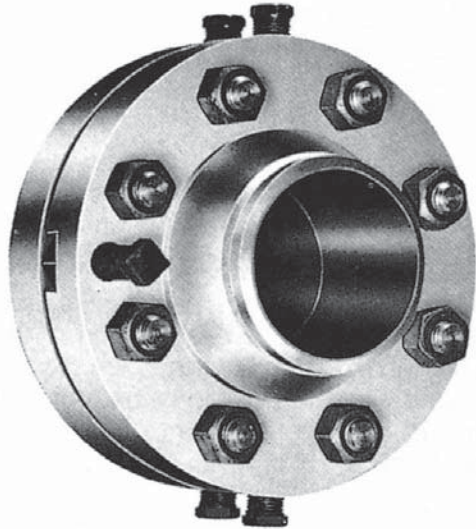
How DAEHAN Orifice Flanges Provide Better Measurement Orifice flanges one of the most economical means of measuring flow, and DAEHAN Orifice Flanges are specially manufactured to be the most accurate. Automatic machine tools enable DAEHAN to meet the most stringent tolerances and recommendations for flanges, with careful attention given to tap location, bore smoothness, bolt and flange facings. DAEHAN Orifice Flanges are made of forged steel, A.S.T.M. A-105. Other materials are available on special order and extended delivery.

ORIFICE PLATE & FLANGE



INNOBIZ

Orifice Plate & Flange Assembly



SPECIFICATIONS

ORIFICE PLATE

ORIFICE BORE TYPE

- Concentric Square Edge Type
- Eccentric Type
- Segmental Type
- Quadrant Edge Type

FLOW CALCULATION STANDARDS

- ISO5167, JIS Z 8762, ASME, KS A 0612

FLANGE RATING

- ANSI 150, 300, KS, JIS 10K 20K, AWWA.

MATERIAL

- 304SS, 304L SS, 316SS, 316L SS, Monel,
- Hastelloy, Inconel, Cu-Ni, PTFE, Glass
- Ni, Cr, Mo Alloy Steel(A182 F11 to 91)

ORIFICE FLANGE

ORIFICE FLANGE TYPE

- Weld Neck Type
- Socket Weld Type
- Slip On Type

NOMINAL DIAMETERS

- 25mm(1inch) to 3000mm(120inch)

TAPS TYPE

- Flange Taps Type
- Corner Taps Type
- D-D/2 Taps Type

MATERIAL

- A105, A182 F304, A182 F316, A182F11, A182 F22, A182 F51, A350 LF2, etc

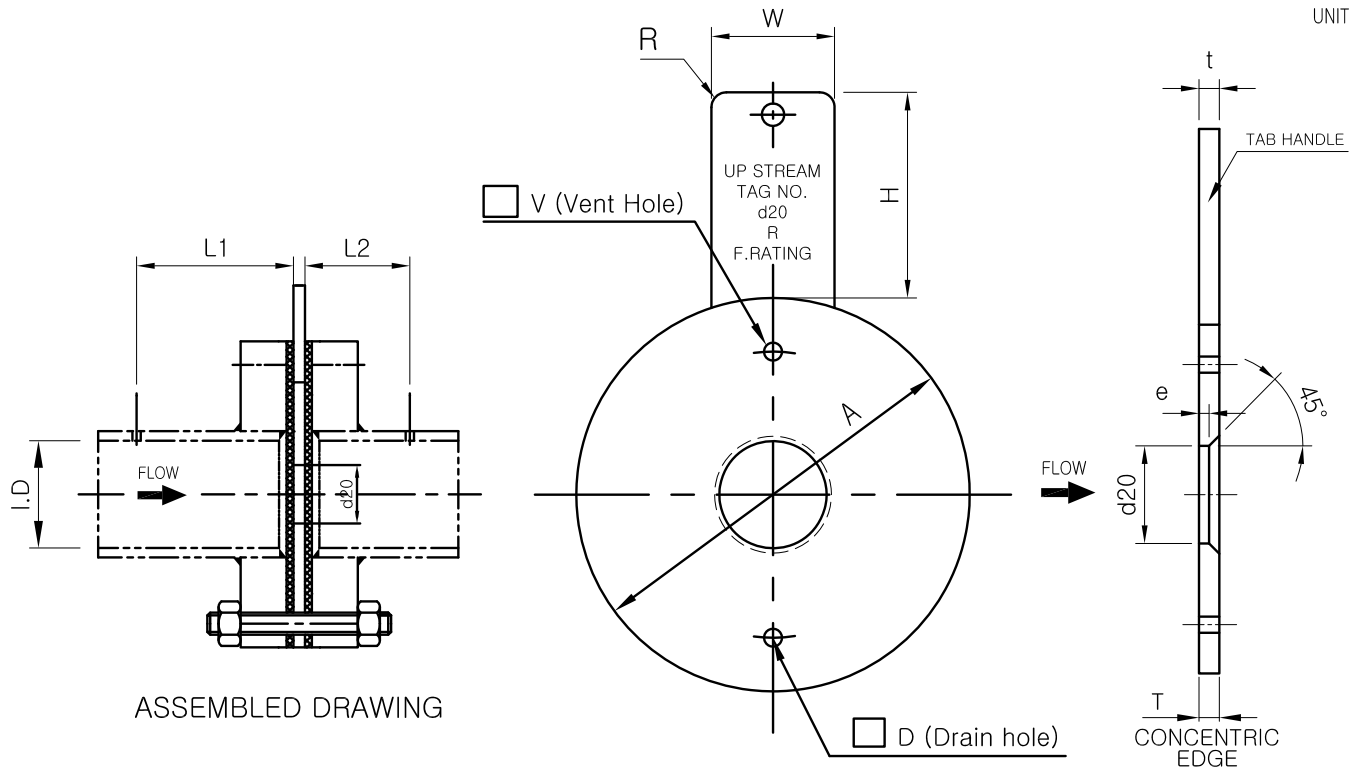
ORIFICE PLATE & FLANGE



MODELS	SUFFIX CODES		DESCRIPTION
Orifice Plate & Flange Assembly	DHOP -----		Plate Only
	DHOF-W -----		Flange Assembly (Bolt, Nut, Gasket Include)
Tap Type	D -----		D-D/2 Taps
	F -----		Flange Taps
	C -----		Corner Taps
Nominal Pipe Size		□□□ -----	Pipe size in inch or mm
Material : Plate/Flange		CS -----	Carbon Steel
		4S -----	304SS
		4L -----	304L SS
		6S -----	316SS
		6L -----	316L SS
		11 -----	A182 F11
		12 -----	A182 F12
		51 -----	A182 F51
		91 -----	A182 F91
		OP -----	Option
Mounting Connection		015 -----	ASME(ANSI) Class 150 LB
		030 -----	ASME(ANSI) Class 300 LB
		010 -----	KS(JIS) Class 10K
		020 -----	KS(JIS) Class 20K
		000 -----	Option
Diff' Taps		1 -----	NPT 1/2
		2 -----	NPT 3/4
		3 -----	SW 1/2
		4 -----	SW 3/4
Meter Run		N -----	None
		Y -----	Include
Option			/□□□




ORIFICE PLATES FOR PN10 FLANGE

UNIT : mm

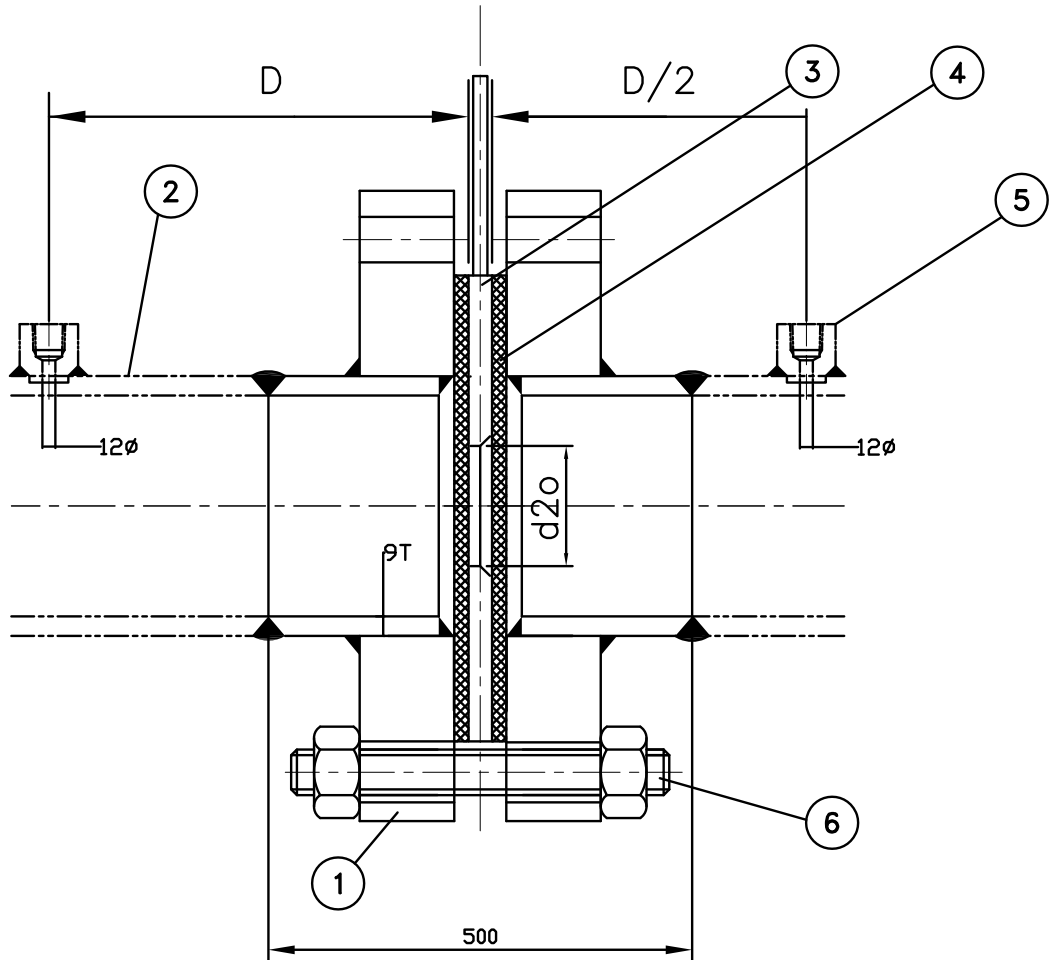


NO.	SIZE	TAG NO	d20	V or D	I.D	L1	L2	Q'TY	REMARK
1	1800A	FE-001	1206.38	-	1790	1790±179	895±89	1	

NOMINAL PIPE SIZE	OUTSIDE DIAMETER OF PLATE A	THICKNESS OF EDGE	DIAMETER OF HOLE (V or D)	THICKNESS OF PLATE T	TAB HANDLE		
					WIDTH W	HEIGHT H	THICKNESS t
72	1972	5~12	-	15	60	190	10

							PROJECT NAME 광양 2고로 송풍							
							TITLE ORIFICE PLATE							
	15.09.07.	Issued for Approval	T. H. OH	S. H. JEONG	G. JAGAN	I. H. PARK	DRAWN		CHECKED	REVIEWED	APPROVED	SCALE	REV. No	
REV.	DATE	REV. DESCRIPTION	DRAWN	CHECKED	REVIEWED	APPROVED	Oh Tae Ho		Jeong Su Hae	Gopi Jagan	Park Il Hwan	N/S		
 DAEHAN INSTRUMENT CO.,LTD.							DATE : 15. 09. 07		MODEL		DRAWING NO		MATERIAL	
							SHEET : 01 OF 02		DHOF-W-D-1800-6S/CS-PN10-1-N		ANSI-150#.dwg		Plate:316SS Flange:A105	

PN10 FLANGE



&d20: Refor to calculation sheet

6	BOLT & NUT	A193 B7	44	M45 X 300L	STUD
5	BOSS	A105	2	PT 1/2	USER SCOPE
4	GASKET		2	DN1800	MAX 350 °C
3	PLATE	SUS316	1	DN1800	
2	PIPE	C/S		DN1800	USER SCOPE
1	FLANGE	A105	2	PN 10 DN1800	
NO.	PARTS NAME	MATERIAL	Q'TY	STANDARD	REMARK



SIZE	FLANGE O.D	BOLT CIRCLE DIAM.	D	D/2
72B (1800A)	2115	2020	1790±179	895±89

PROJECT NAME

광양 2고로 송풍

TITLE

ORIFICE ASSEMBLY

	15.09.17.	Issued for Approval	T. H. OH	S. H. JEONG	G. JAGAN	I. H. PARK
	15.09.07.	Issued for Approval	T. H. OH	S. H. JEONG	G. JAGAN	I. H. PARK
REV.	DATE	REV. DESCRIPTION	DRAWN	CHECKED	REVIEWED	APPROVED

DRAWN	CHECKED	REVIEWED	APPROVED	SCALE	REV. No
Oh Tae Ho	Jeong Su Hae	Gopi Jagan	Park Il Hwan	N/S	1
DATE : 15. 09. 17	MODEL	DRAWING NO	MATERIAL		
SHEET : 02 OF 02	DHOF-W-D-1800-6S/CS-PN10-1-N	ANSI-150#.dwg	Plate:316SS Flange:A105		



DAEHAN INSTRUMENT CO.,LTD.