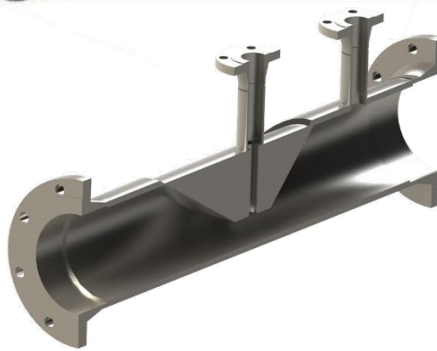
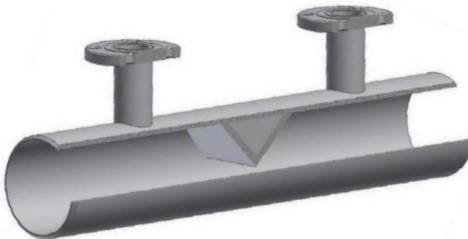
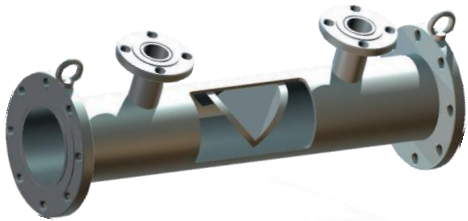


WEDGE METER

1. THE CHARACTERISTIC

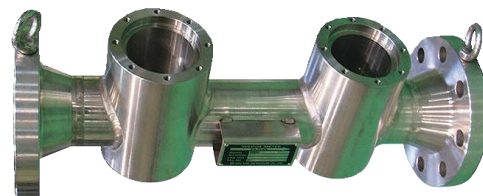


DHWM-F / DHWM-BW / DHWM-T/ DHWM-R Series Wedge Meter is an flow gauge(meter) that measure quantity of flow in poor conditions.

DHWM-F Series can be measure to quantity of flow like as Liquid, Gas, Steam, as well as fluid included sludge.

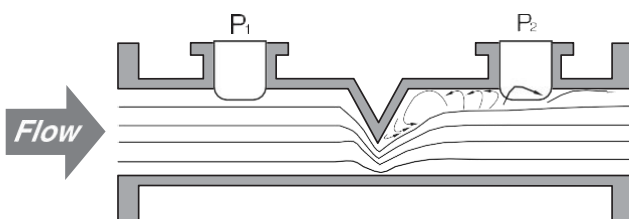
Specially, it is suitable to measure quantity of flow for flow fluid with high viscosity.

It is possible to measure both flow.



2. THEORY

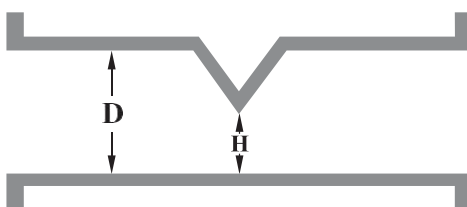
$$Qv \propto k \sqrt{P_1 - P_2}$$



DHWM-F Series estabilised Wedge of "V" type in tube.

The quantity of flow is measured by pressure difference of both side by means of wedge.

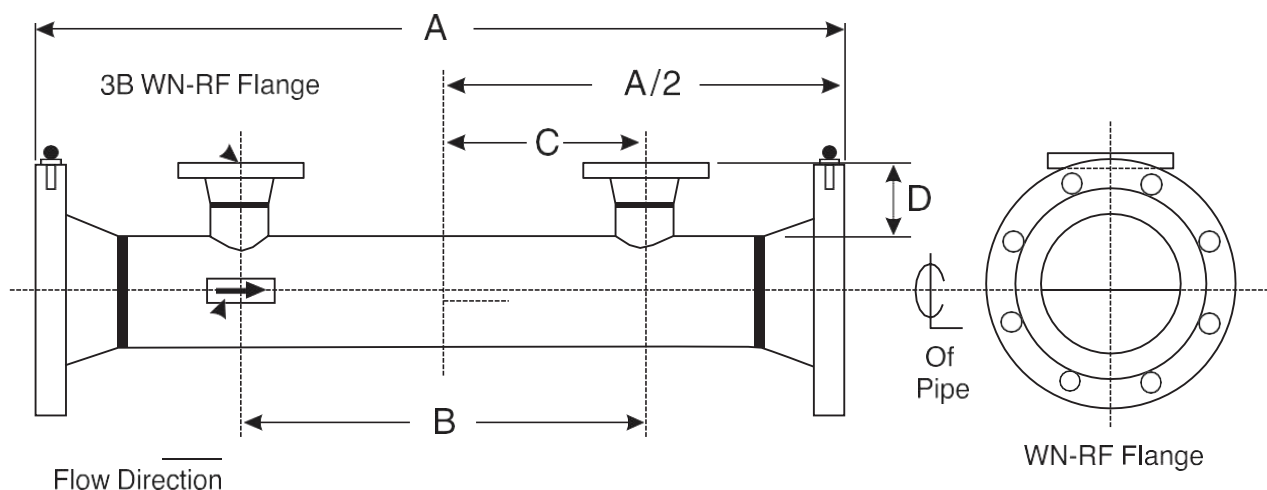
3. CAPACITY



Viscosity	±0.5% of measured value after Calibration (±3% before calibration)
Repeatability	±0.2
Maximum temperature	538 °C
Range	10:1
H/D Ratio	0.2~0.5
Tube type	25A~600A
Straight line part of tube	Front 6 10D / Rear 3D

WEDGE METER

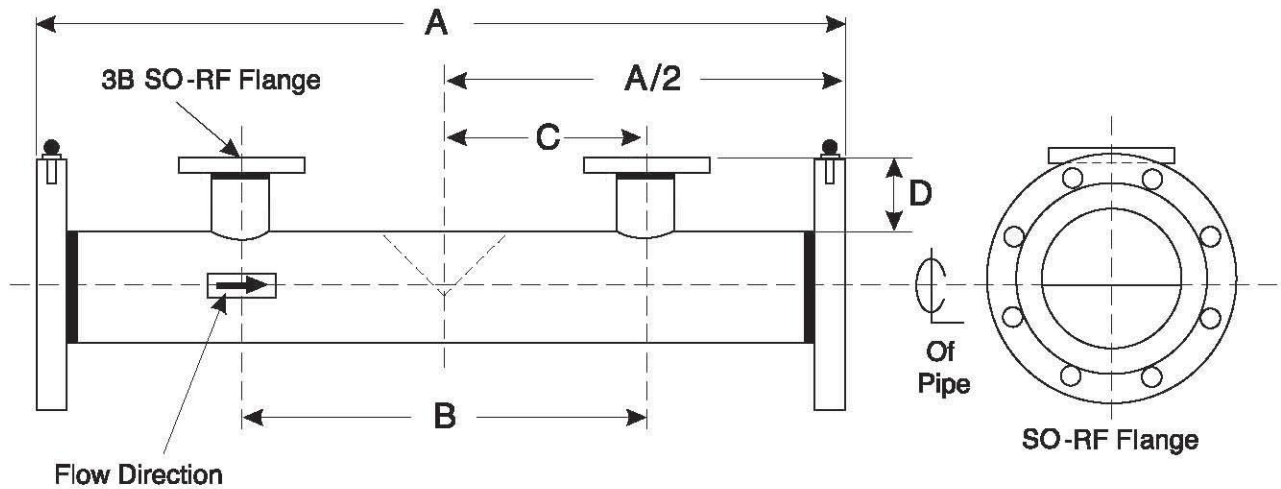
4. DIEMENSION



WN-RF TYPE

Pipe Size	A Dim(mm) Flange Rating			B Dim (mm)	C Dim (mm)	D Dim(mm) Flange Rating		
	150	300	600			150	300	600
40A	530	543	559	292	146	208	214	213
50A	546	559	578	292	146	216	222	232
80A	622	641	660	311	156	156	167	175
100A	902	921	965	381	191	114	125	133
125A	965	972	1005	419	210	114	125	133
150A	1029	1048	1099	457	229	114	125	133
200A	1092	1111	1168	521	260	114	125	133
250A	1143	1175	1257	597	298	114	125	133
300A	1321	1353	1416	673	337	114	125	133
350A	1397	1429	1486	711	356	114	125	133
400A	1473	1511	1588	775	387	114	125	133
450A	1575	1613	1676	851	425	114	125	133
500A	1686	1721	1791	940	470	114	125	133
600A	1854	1886	1969	1067	533	114	125	133

WEDGE METER



SO-RF TYPE

Pipe Size	A Dim (mm)	B Dim (mm)	C Dim (mm)	D Dim(mm) Flange Rating		
				150	300	600
025A	495	272	136	208	214	214
040A	529	292	146	208	214	214
050A	546	292	146	216	222	232
065A	580	300	150	216	222	232
080A	622	311	156	156	167	175
100A	762	381	191	114	125	133
125A	813	419	210	114	125	133
150A	864	457	229	114	125	133
200A	914	521	260	114	125	133
250A	965	597	298	114	125	133
300A	1118	673	337	114	125	133
350A	1168	711	356	114	125	133
400A	1245	775	387	114	125	133
450A	1321	851	425	114	125	133
500A	1422	940	470	114	125	133
600A	1575	1067	533	114	125	133



WEDGE METER

5. ORDERING INFORMATION

Series	Pipe Size		Material	Process Connection	DP Taps Connection	DP Taps Q'ty	Option
	(mm)		Wedge/Pipe/Flange				
DHWM-F (Flange type)	025A	25	C C.S	MS ANSI 150# SORF			
	040A	40	4 304SS	MW ANSI 150# WNRF			
	050A	50	6 316SS	NS ANSI 300# SORF			
	065A	65	4L 304L	NW ANSI 300# WNRF			N None
DHWM-BW (Butt weld type)	080A	80	6L 316L	OS ANSI 600# SORF		1 1Pair	V Valven Include
	100A	100	2 321SS	OW ANSI 600# WNRF	2 ANSI 2B	2 2Pa ir	DP Transmitter Include
	125A	125	H Hastelloy C	PS ANSI 900# SORF	3 ANSI 3B	3 3Pa ir	S Stanchion Include
	150A	150	W 其他	PW ANSI 900# WNRF	4 ANSI 4B	4 4Pa ir	
DHWM-T (Chemical tee type)	200A	200		QS ANSI 900# SORTJ	5 Other		
	250A	250		QW ANSI 900# WNRTJ			
	300A	300	<u>※Additional option</u>	RS ANSI 1500# SORTJ			
	350A	350	(S) Solid type	RW ANSI 1500# WNRTJ			
DHWM-J (Jacket type)	400A	400	(+S.C) Stellite coating	SS ANSI 2500# SORTJ			
	450A	450	(+T.C) Tungsten Carbide coating	SW ANSI 2500# WNRTJ			
DHWM-R (Rectangle type)	500A	500		S OTHER			
	600A	600					

Ex) DHWM-F-100A-6(S+TC)/C/CM522N